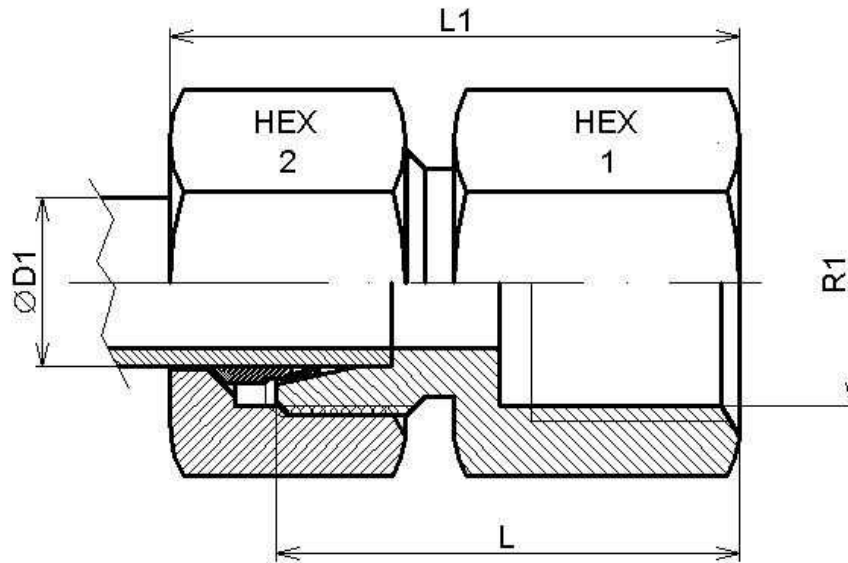


Racor recto hembra rosca BSP

Artículo	ØD1	Serie	R1	Presión trabajo (bar)	L	L1	HEX 1	HEX 2
HC3410706LR02	6	L	1/8" BSP	315	26	34	14	14
HC3410708LR04	8	L	1/4" BSP	315	31	39	19	17
HC3410710LR04	10	L	1/4" BSP	315	32	40	19	19
HC3410710LR06	10	L	3/8" BSP	315	33	41	22	19
HC3410710LR08	10	L	1/2" BSP	315	37	45	27	19
HC3410712LR06	12	L	3/8" BSP	315	33	41	22	22
HC3410712LR08	12	L	1/2" BSP	315	37	45	27	22
HC3410715LR08	15	L	1/2" BSP	315	38	46	27	27
HC3410718LR08	18	L	1/2" BSP	315	38	47	27	32
HC3410722LR12	22	L	3/4" BSP	160	43	52	32	36
HC3410728LR16	28	L	1" BSP	160	45,5	54,5	41	41
HC3410735LR20	35	L	1"1/4 BSP	160	51,5	62,5	50	50
HC3410742LR24	42	L	1"1/2 BSP	160	53,5	65,5	55	60
HC3410706SR04	6	S	1/4" BSP	400	33	41	19	17
HC3410708SR04	8	S	1/4" BSP	400	33	41	19	19
HC3410710SR06	10	S	3/8" BSP	400	34	43	24	22
HC3410714SR08	14	S	1/2" BSP	400	40	50	27	27
HC3410716SR08	16	S	1/2" BSP	400	40	50	27	30
HC3410720SR12	20	S	3/4" BSP	315	45	56	36	36
HC3410725SR16	25	S	1" BSP	315	49,5	61,5	41	46
HC3410730SR20	30	S	1"1/4 BSP	315	55,5	68,5	50	50
HC3410738SR24	38	S	1"1/2 BSP	250	59,5	74,5	60	60